

# SAVIN®

## SP 5300DN/ SP 5310DN

### Desktop B&W Printer

- Printer
- Copier
- Facsimile
- Scanner



SP 5300DN

52  
ppm monochrome

SP 5310DN

62  
ppm monochrome

## Extend print performance with speed, convenience and security

You're always trying to tailor information to fit your audience. Now you have the ideal printer to do it. Introducing the SAVIN® SP 5300DN/SP 5310DN, a compact and convenient laser printer that can meet even the largest workloads in midsize workgroups. Take advantage of fast print speeds to churn through more jobs quickly. Protect documents with user authentication. Take advantage of high-yield consumables and spend less time on maintenance, so you can move on to the next project quickly. Best of all, you can complete every print task from this versatile device whether it's on the desktop, in a cabinet or in the corner — or even from your smartphone or tablet — for anytime, anywhere productivity.

### Move printed information quickly, conveniently

Use the SP 5300DN/SP 5310DN to print black-and-white invoices, notes, presentations, meeting agendas, forms and more at up to 62 pages per minute, so you can share information with your audience when they need it most. Check settings and switch to and from jobs in only moments via the intuitive 4-line LCD control panel and keypad. Add the optional hard disk drive (HDD) to store frequently used documents locally on the device for fast, convenient on demand printing. With resolution up to 1200 x 1200 dpi at rated speed, you can enhance your best messages with razor-sharp images and precise text to impress every time. Place the compact printer almost anywhere, even on the desktop. Integrate it with front office, server-based computing or host print network environments, as well as Macintosh® or Windows® applications.



### Be productive every way, every day

People look to you for information. Make them wait too long and they'll start looking elsewhere. With the SP 5300DN/SP 5310DN, you can keep information flowing without stopping to perform maintenance. Take advantage of high yield supplies and ultra long-life components that provide minimal maintenance and ensure maximum uptime and reliability. With robust monthly print volumes, you can maintain low costs per print. Add up to four front-loading, adjustable paper sources to extend capacity up to 2,600 sheets and minimize interruptions for paper reloading. Get started quickly with a first print out in less than six seconds.



### Get a handle on more types of jobs

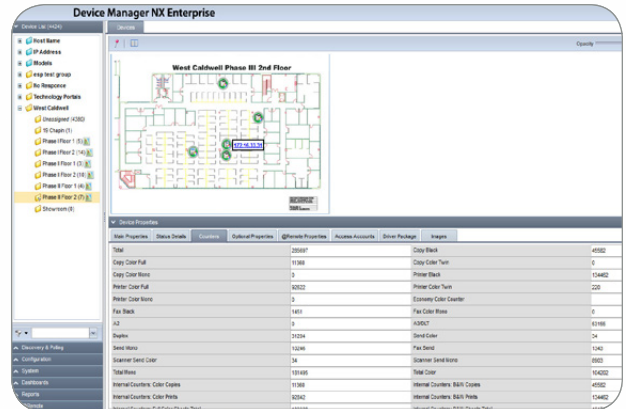
With deadlines looming and a wide of range of projects in queue, you're looking for a printer that can do it all. You're looking for convenience. Use the SP 5300DN/SP 5310DN for high-quality output on paper sizes up to 8.5" x 14", and produce more of your everyday work from a single device. Whether you're using the standard 500-Sheet paper tray or one of the four optional 500-Sheet paper sources, you can change paper stock easily via the adjustable, front-loading design. Use the 100-Sheet Bypass Tray to print on paper up to 122 lb. Index, including a wider variety of media and specialty stocks.



# Take control of more productive, reliable print workflows

## Print at any time, from anywhere

Print what you want, where you want, when you need it. After downloading the Smart Device Connector app or our app for Google Cloud Print, you can access documents directly from your smartphone, tablet or Cloud application and send them instantly to the printer. In addition, you can install print drivers automatically from anywhere with Device Software Manager. Gather meter readings and automate service calls with @Remote. And monitor or configure your device with Device Manager NX or Web Image Monitor.



## Secure what's most important

When the right people have the right information, they can make the right decisions. Use the SP 5300DN/SP 5310DN to get it to them quickly and securely. Take advantage of user authentication features to provide or limit device access via passcodes or billing codes. You'll know exactly which users are using the device — and what they're printing. You can even set print quotas to curb excessive printing. Use watermarks to mask confidential information when unauthorized users try to copy it. Add the optional HDD for comprehensive encryption and overwrite latent images on the hard drive with the built-in DataOverwriteSecurity System (DOSS). Plus, it offers Locked Print, so you can keep documents on hold until the authorized user releases them at the device.



## Use minimal energy to maximize your budget

You'll barely notice the quiet, compact SP 5300DN/SP 5310DN in your office. But you'll definitely notice the huge impact it makes on reducing energy costs and your total cost of ownership. It's ENERGY STAR® certified, has a low Typical Electricity Consumption (TEC), and meets EPEAT® Silver criteria\*. The Eco-Night Sensor can sense ambient lighting and power off the printer automatically when office lights are shut off. When the lights are turned back on, the printer can power on automatically. Or, you can simply program the printer to power off or power on at specific times each day to control operating costs. For even more savings, you can set duplex printing as the default and significantly reduce paper usage.

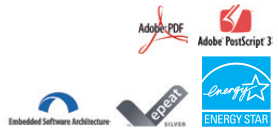


\*EPEAT Silver rating is applicable only in the USA.

To view detailed features of our Desktop B&W Printer products online go to [www.savin.com/products](http://www.savin.com/products)

# Savin SP 5300DN/SP 5310DN

## SYSTEM SPECIFICATIONS



### Engine Specifications

Configuration	Desktop
Technology	B&W laser electro-photographic printing
Toner Type	Dry, mono component
Control Panel	4-line LCD
B&W Print Speed (Letter)	SP 5300DN: 52 ppm SP 5310DN: 62 ppm
Maximum Monthly Volume	SP 5300DN: 16,600 prints SP 5310DN: 16,600 prints
Duty Cycle	SP 5300DN: 250,000 prints SP 5310DN: 275,000 prints
First Print Out Time	6 seconds or less
Warm-up Time	SP 5300DN: 21 seconds SP 5310DN: 25.4 seconds
Recovery from Sleep Mode	20 seconds or less
Print Resolution	Up to 1200 x 1200 dpi
Standard Paper Capacity	1 x 500-Sheet Tray + 100-Sheet Bypass Tray
Maximum Paper Capacity	2,600 sheets
Standard Output Capacity	500 sheets (LT)
Supported Paper Sizes	Paper Tray: 4.13" x 5.83" – 8.5" x 14" Bypass Tray: 2.76" x 5.83" – 8.5" x 14" Optional Trays: 3.62" x 6.38" – 8.5" x 14"
Supported Paper Weights	Standard Tray, Optional Trays and when Duplexing: 17-32 lb. Bond/66 lb. Index (64-120 g/m <sup>2</sup> ) Bypass Tray: 16-59 lb. Bond/122 lb. Index (60-220 g/m <sup>2</sup> )
Supported Paper Types	Plain, Thin, Middle, Thick, Recycled, Colored, Special, Letterhead, Preprinted, Bond, QHP (Transparency)*, Label*, Envelopes**
Duplexing	Automatic (standard)
Dimensions (WxDxH)	16.54" x 16.14" x 13.58" (420 x 410 x 345 mm) (mainframe)
Weight	39.6 lbs. (18 kg)
Power Consumption (Operating)	SP 5300DN: 688 W SP 5310DN: 729 W
Power Consumption (Sleep Mode)	SP 5300DN: 0.60 W SP 5310DN: 0.70 W
Typical Electricity Consumption*** (TEC)	SP 5300DN: 2.7 kWh/week SP 5310DN: 3.3 kWh/week
Power Requirements	120 V, 60 Hz, 12A
ENERGY STAR	Certified
EPEAT	Silver Rated

\*From Bypass Tray only.

\*\*From Bypass Tray and Optional Paper Trays

\*\*\*Typical Electricity Consumption by ENERGY STAR program.

### Printer Specifications

Processor Speed	1.46 GHz
Memory	2 GB RAM
Hard Disk Drive	320 GB (optional)
Connection Type	Standard: Gigabit Ethernet (1000/100/10BASE-T), USB 2.0 Type A x 2, SD Card Slot x 2 Optional: Wireless LAN IEEE802.11a/b/g/n, Bluetooth, USB 2.0 Type B, IEEE1284, NIC 2 Port (Print Server)

### Printer Languages

Standard: PCL5e/6, Genuine Adobe® PostScript®3™, PDF Direct Print

Optional: XPS

### Font Support

PCL: 45 fonts + 6 Bitmapped fonts + 13 International fonts

PostScript3: 136 fonts

TCP/IP (IPv4, IPv6)

### Network Protocols Supported Operating

Windows® Vista/7/8/8.1/10/Server2003/Server 2003R2/Server 2008/Server 2008R2/Server 2012/Server 2012 R2, CPS/XenApp PCL/PS only; Mac OS X (10.7 or later) PS only; UNIX Sun Solaris 9/10, HP-UX 11.x, 11i v2, 11i v3, Red Hat Linux Enterprise V4/V5/V6, SCO OpenServer 5.0.7/6.0, IBM AIX V5L/V5.3/V6.1/V7.1; SAP R/3

### Device Management Software/Utilities

Device Software Manager, Web Image Monitor, Enhanced Locked Print NX, FlexRelease NX, Card Authentication Package, Remote Communication Gate Type S, Remote Communication Gate Type A, @Remote Connector NX, Device Manager NX Lite/Accounting/Pro/Enterprise, Printer Driver Packager NX Smart Device Connector, App for Google Cloud Print, Airprint Eco-Night Sensor, PDF Direct Print, Classification Code, Bonjour Support, Windows Active Directory Support, DDNS Support, PCL Resident Font Adoption, Tray Parameter Change from Web Image Monitor, 1200 dpi Support, Universal Driver, XPS Support, WS Printer, Wireless LAN Interface Option, Banner Page Print, Poster Print, WPS Support, Sample/Locked/ Hold/Store Print/Store and Print\*, Import/Export of Preference Settings, Centralized Address Book Management

### Mobile Print

### Other Print Features

\*Hard disk drive option required.

### Controller Options

Extended USB Board Type M19

IEEE 1284 Interface Board Type M19

Wireless LAN Card Type M24 (IEEE802.11a/b/g/n)

XPS Direct Print Option Type M24

Hard Disk Drive Option Type P8 (320 GB)

VM Card Type P8

### Security Features

Windows, LDAP, 802.1x Wired, Basic and User Code Authentication\*, Data Encryption (Address Book, Authentication Password, SSL, S/MIME, IPsec, HDD, SMTP over SSL/TLS, TLS, SSH, Wireless LAN (WEP/WPA/11)), Network Protocol On/Off, IP Filtering, Mask Type for Copying/Data Security, Unauthorized Copy Prevention, Kerberos support, Quota Setting/Account Limit, HDD Data Overwrite and Encryption\*

\*Optional hard disk drive required.

### Hardware Options

#### Paper Feed Unit PB1100

Paper Capacity 500 sheets

Supported Paper Sizes 3.62" x 6.38" – 8.5" x 14"

Supported Paper Weight 17 – 32 lb. Bond/66 lb. Index (64 – 120 g/m<sup>2</sup>)

Dimensions (WxDxH) 15" x 16.1" x 4.8" (380 x 410 x 121 mm)

Weight 8.8 lbs. (4 kg)

#### Caster Table Type M24

Required when the maximum of four (4) optional Paper Feed Units are installed for a floor-standing configuration.

Dimensions (WxDxH) With Anti-tipper: 30.6" x 31.8" x 2.5" (778 x 808 x 64 mm)

Without Anti-tipper: 15" x 16.1" x 2.5" (380 x 410 x 64 mm)

Weight 24.2 lbs. (11 kg)

#### Weight

#### Tall Cabinet Type I

Recommended when one (1) or two (2) optional Paper Feed Units are installed for a floor-standing configuration.

Dimensions (WxDxH) 15" x 16.2" x 20" (381 x 412 x 508 mm)

Weight 22.5 lbs. (10.5 kg)

#### Medium Cabinet Type J

Recommended when three (3) optional Paper Feed Units are installed for a floor standing configuration.

Dimensions (WxDxH) 15" x 16.2" x 10" (381 x 412 x 254 mm)

Weight 13.7 lbs. (6.2 kg)

### Consumables & Yields

Black Print Cartridge MP 601 25,000 pages\*

(includes Waste Toner Bottle)

Feed Roller MP 601 500,000 pages

(for mainframe)

Feed Roller MP 601PB 500,000 pages

(for PFU)

\*Declared yield values in accordance with ISO/IEC 19752. Actual yields may vary based on images printed and other factors.

The Savin SP 5300DN/SP 5310DN ships with a starter Print Cartridge that yields 10,000 pages.

For maximum performance and yield we recommend using genuine Savin parts and supplies.

Specifications subject to change without notice.

### Warranty

The Savin SP 5300DN/SP 5310DN is under warranty against defects for a period of one year from the date of purchase. Consumables are under warranty for a period of 90 days from the date of purchase or until depleted, whichever comes first. Please refer to warranty documents shipped with the product for more details.